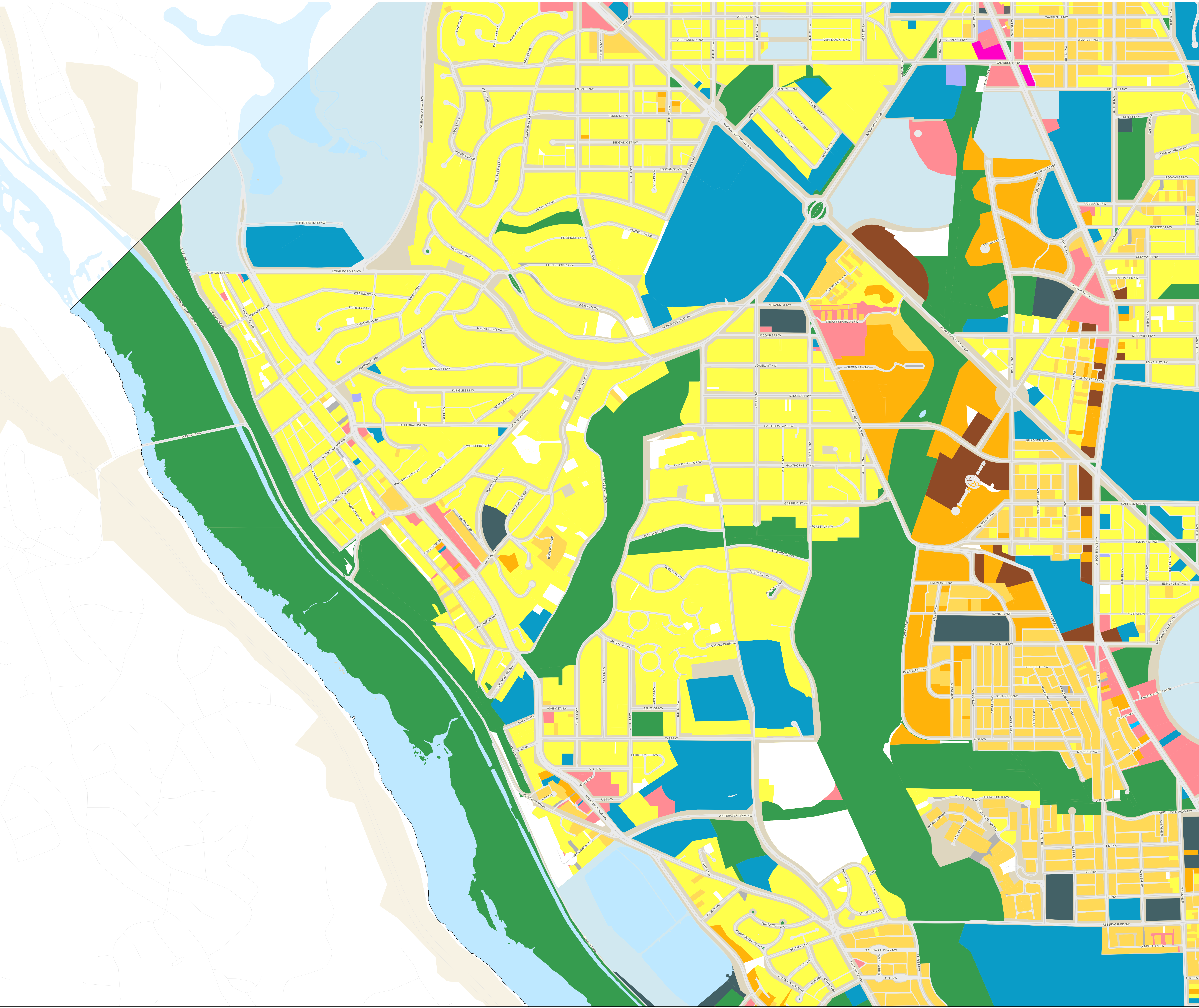
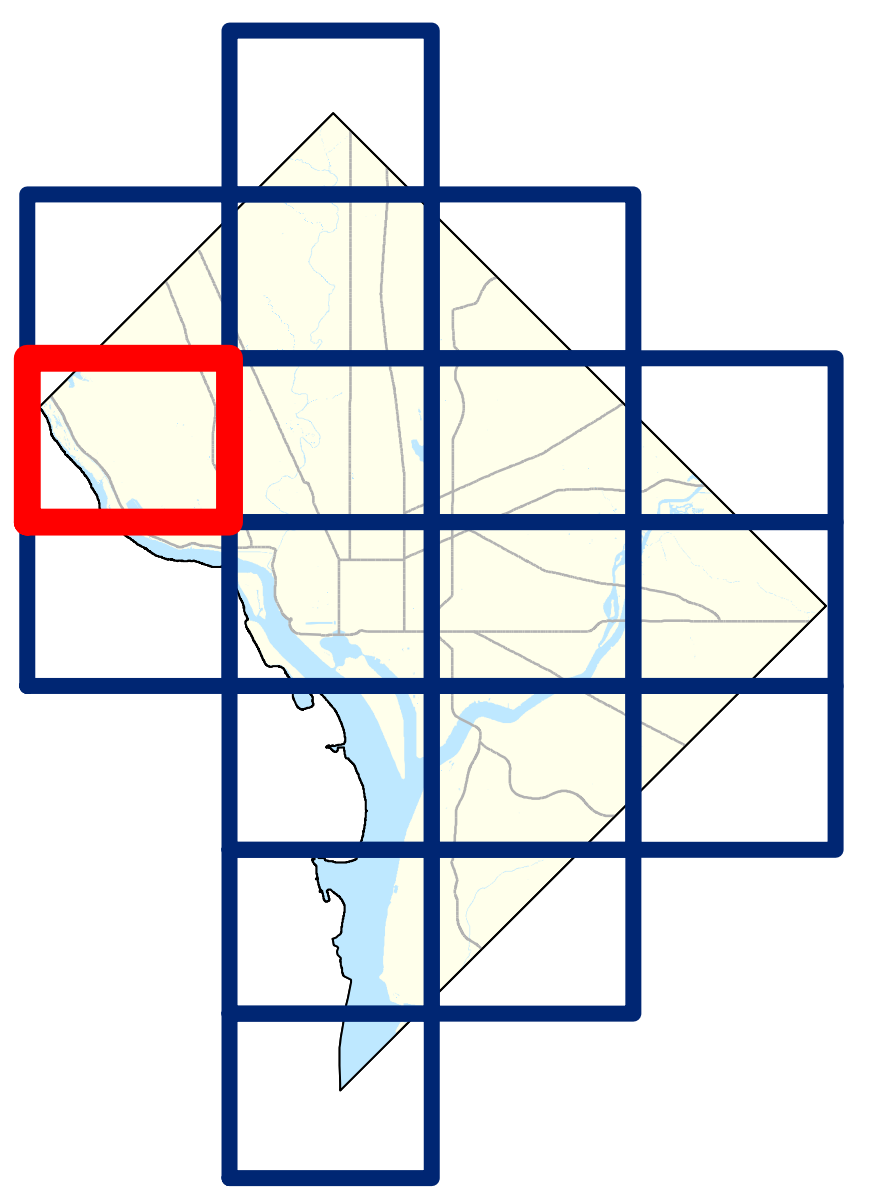


# Existing Land Use

## Map Tile 5



- Existing Land Use**
- Low Density Residential
  - Low-Medium Density Residential
  - Medium Density Residential
  - High Density Residential
  - Commercial
  - Transport, Communication, Utilities
  - Industrial
  - Mixed Use
  - Institutional
  - Federal Public
  - Local Public
  - Public, Quasi-Public, Institutional
  - Parks and Open Spaces
  - Parking
  - Roads; Alleys; Median
  - Transportation Right of Way
  - UnDetermined
  - Water
  - Vacant



**Government of the District of Columbia**  
**Anthony A. Williams, Mayor**

Office of Planning ~ April 21, 2006

This map was created for planning purposes from a variety of sources. It is neither a survey nor a legal document. Information provided by other agencies should be verified with them where appropriate. Oblique imagery ©2003 Pictometry International

**Feet**  
0 500 1,000

**N**